



TELESCOPING CRAWLER CRANE

CC1908S-1

Crane Capacity
17,800lb x 9.1ft
(8.1t x 2.8m)

MINIMAL TAIL SWING

STAGE V COMPLIANT ENGINE

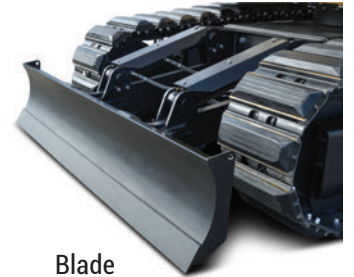
PROGRAMMABLE MOMENT LIMITER (TOUCHSCREEN)

SWING ANGLE LIMIT SETTING

7,700LB (3.5T) PICK & CARRY CAPACITY



Max Lifting Height :
265.9ft - 85.3ft
with optional fly jib



Blade

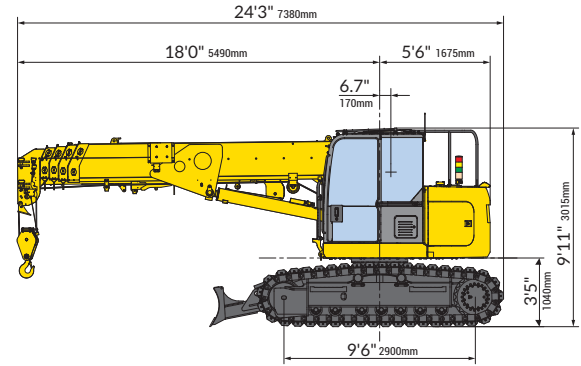
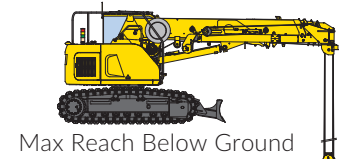


Radio Remote Control

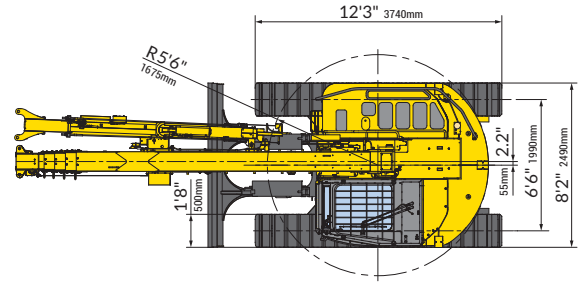


Specifications

| Model | | CC1908S-1 |
|------------------------------------|---|---|
| Crane capacity | 17,800lb x 9.1ft (8.1t x 2.8m) | |
| Max working radius | 63.0ft / 68.5ft with fly jib (19.23m / 20.9m with fly jib) | |
| Max lifting height | 65.9ft / 85.3ft with fly jib (20.1m / 26.0m with fly jib) | |
| Max reach below ground level | -76.1ft (6parts) / -117.4ft (4parts) / -240.1ft (2parts) / -488.1ft (1part) [-23.2m (6 falls) / -35.8m (4 falls) / -73.2m (2 falls) / -148.8m (1 fall)] | |
| Pick & Carry capacity | 7,700lb (3.5t) | |
| Machine Weight (incl. rubber pads) | 42,780lb / 43,880lb with fly jib (19,400kg / 19,900 with fly jib) | |
| Machine Weight with Blade | 44,870lb / 45,980lb with fly jib (20,350kg / 20,850 with fly jib) | |
| Overall length x width x height | 24'3" x 8'2" x 9'11" (7,380mm x 2,490mm x 3,015mm) | |
| Tail swing | 5'6" (1,675mm) | |
| Winch system | Number of wire parts for Hook | 6 parts / 4 parts / 2 parts / 1 part (option) |
| | Hook speed Low | 62.34ft/min (4 layers, 6 parts) [19.0m/min (4 layers, 6 falls)] |
| | Hook speed High | 88.58ft/min (4 layers, 6 parts) [27.0m/min (4 layers, 6 falls)] |
| | Hoist wire rope | IWRC 6 x Fi(29) φ10mm x 160m |
| Telescopic system | Boom type | Fully automatic 5-section pentagonal telescopic boom |
| | Boom length | 18.11ft(5.52m) - 29.49ft(8.99m) - 40.88ft(12.46m) - 52.26ft(15.93m) - 63.65ft(19.40m) |
| | Boom telescoping stroke / time | 45.5ft / 51sec (13.88m / 51sec) |
| Boom hoist system | Hoist angle / time | 0 to 80 degree / 23sec |
| Swinging system | Swing angle / time | 360deg / 2.5rpm |
| Drive system | Travel speed Low | Forward & backward 0~1.1mph (0~1.8km/h) |
| | Travel speed High | Forward & backward 0~1.9mph (0~3.1km/h) |
| | Gradability | 20deg |
| | Ground pressure | 9.51PSI / 9.76PSI with fly jib (65.6kPa / 67.3kPa with fly jib) |
| | Ground pressure with Blade | 9.98PSI / 10.23PSI with fly jib (68.8kPa / 70.5kPa with fly jib) |
| Engine | Model | Yanmar 4TNV98CT |
| | Emission level | EU Stage V |
| | Displacement | 202.48cu in (3.318L) |
| | Rated output | 70.13hp SAE / 2,100min ⁻¹ (71.1PS / 2,100rpm) |
| | Fuel / Fuel tank capacity | Diesel / 39.6gallon (150.0L) |
| Safety device | Hydraulic safety valve, Anti two block, Level, Safety lock lever, Tilt alarm, EMO switch, Moment limiter, LED working status lamp, Surround view camera, Data logger, Slew restriction device | |
| Optional items | Single part hook, Blade, Searcher hook (4,400lb), Hydraulic type Fly jib (3,350lb), Radio remote control, Fuel feed pump, Tool box, Side mirror | |



Dimensions



- 6 parts
76.1ft (23.2m)
- 4 parts
117.4ft (35.8m)
- 2 parts
240.1ft (73.2m)
- 1 part
488.1ft (148.8m)

Rated Total Load Chart (6 Parts Line)

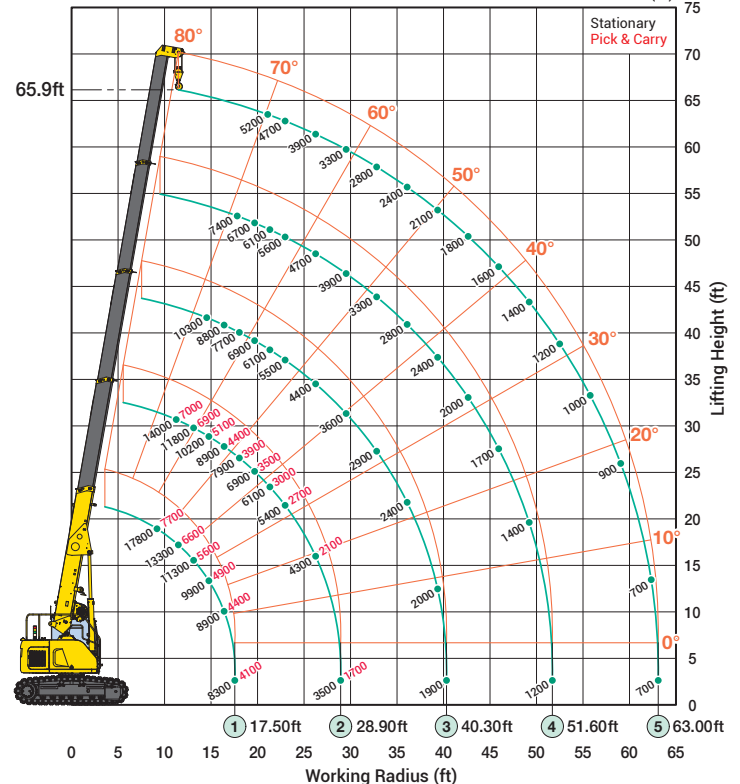
unit: lb

| Working radius (ft) | 18.11ft Boom | | 29.49ft Boom | | 40.88ft Boom | 52.26ft Boom | 63.65ft Boom |
|---------------------|--------------|--------------|--------------|--------------|--------------|--------------|--------------|
| | Stationary | Pick & Carry | Stationary | Pick & Carry | Stationary | Stationary | Stationary |
| 6.5 | 17800 | 7700 | 14000 | 7000 | | | |
| 8.2 | 17800 | 7700 | 14000 | 7000 | 10300 | | |
| 9.1 | 17800 | 7700 | 14000 | 7000 | 10300 | | |
| 9.8 | 16300 | 7700 | 14000 | 7000 | 10300 | 7400 | |
| 11.4 | 13300 | 6600 | 13700 | 6900 | 10300 | 7400 | 5200 |
| 13.1 | 11300 | 5600 | 11800 | 5900 | 10300 | 7400 | 5200 |
| 14.7 | 9900 | 4900 | 10200 | 5100 | 10100 | 7400 | 5200 |
| 16.4 | 8900 | 4400 | 8900 | 4400 | 8800 | 7400 | 5200 |
| 17.5 | 8300 | 4100 | 8200 | 4100 | 8000 | 7400 | 5200 |
| 18.0 | | | 7900 | 3900 | 7700 | 7400 | 5200 |
| 19.6 | | | 6900 | 3500 | 6900 | 6700 | 5200 |
| 21.3 | | | 6100 | 3000 | 6100 | 6100 | 5100 |
| 22.9 | | | 5400 | 2700 | 5500 | 5600 | 4700 |
| 26.2 | | | 4300 | 2100 | 4400 | 4700 | 3900 |
| 28.9 | | | 3500 | 1700 | 3700 | 4100 | 3400 |
| 29.5 | | | | | 3600 | 3900 | 3300 |
| 32.8 | | | | | 2900 | 3300 | 2800 |
| 36.0 | | | | | 2400 | 2800 | 2400 |
| 39.3 | | | | | 2000 | 2400 | 2100 |
| 40.3 | | | | | 1900 | 2300 | 2000 |
| 42.6 | | | | | | 2000 | 1800 |
| 45.9 | | | | | | 1700 | 1600 |
| 49.2 | | | | | | 1400 | 1400 |
| 51.6 | | | | | | 1200 | 1200 |
| 52.4 | | | | | | | 1200 |
| 55.7 | | | | | | | 1000 |
| 59.0 | | | | | | | 900 |
| 62.3 | | | | | | | 700 |
| 63.0 | | | | | | | 700 |

*The Rated Total Load Chart is based on the actual working radius including boom deflection.
*The weight of the hook block (standard 6, 4 & 2part -190lb) must be included as part of the load shown in the Rated Total Load Chart.
*When using 4 part, 2 part or single part hooks, use the appropriate 6 part Rated Total Load Chart above but with a maximum load of: 4 part-13,400lb, 2 part-6,800lb, Single part-3,300lb.

Working Range Chart (6 Parts)

(lb)



ASME B 30.5 compliant

